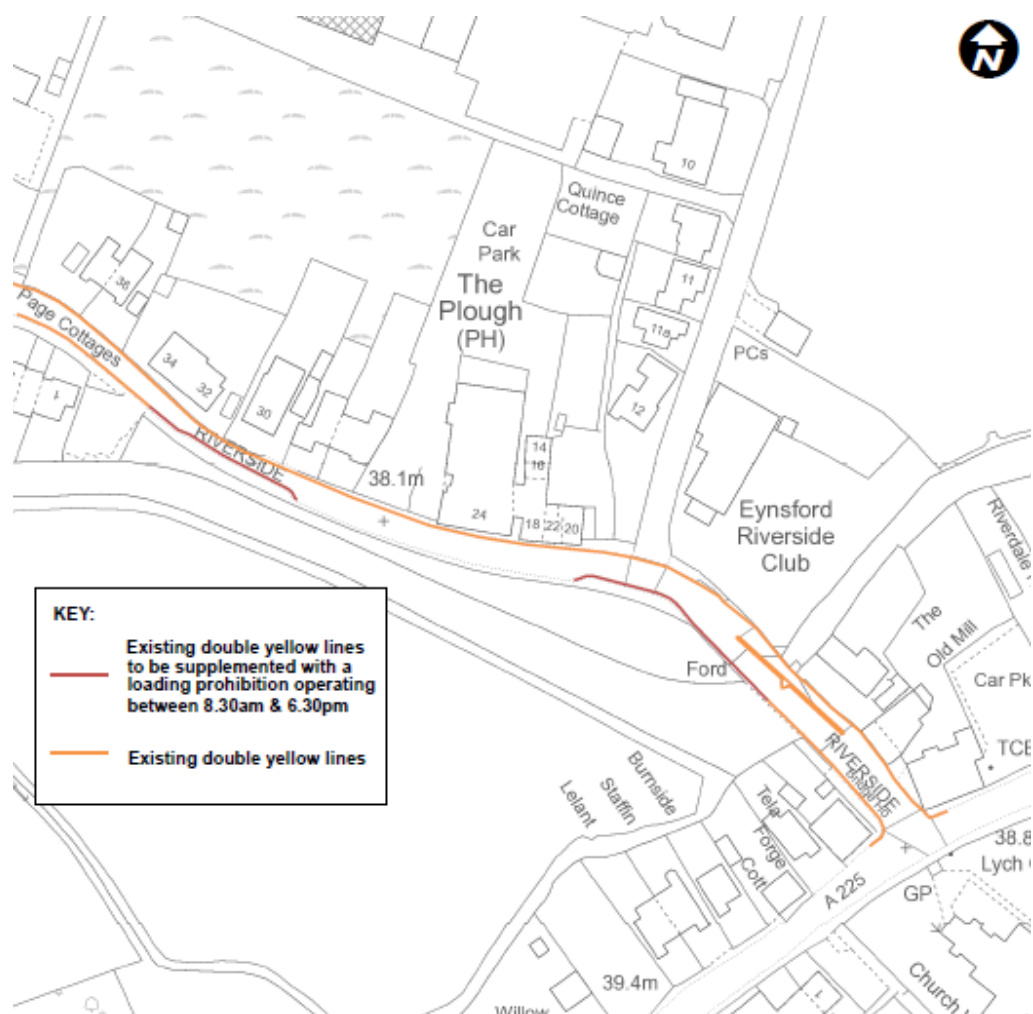


APPENDIX 1 - FOR INFORMATION
EYNSFORD - RIVERSIDE - PARKING PROPOSALS
Description and plan of parking proposals, and Officers' comments

EYNSFORD: Riverside



PARKING PROPOSALS FOR RIVERSIDE, EYNSFORD

Supplement sections of existing double yellow line (no waiting at any time) restrictions with a prohibition on loading/unloading operating between 8.30am and 6.30pm on:

- Southwest side, west of the bridge/ ford crossing
- Southwest side, opposite nos. 28-34

STATUTORY CONSULTATION FEEDBACK

No feedback supporting or objecting to the proposals was received during the statutory consultation

OFFICERS' COMMENTS

Since no objections were received during the statutory consultation, this proposal can be implemented, as drawn, without the need for a recommendation.